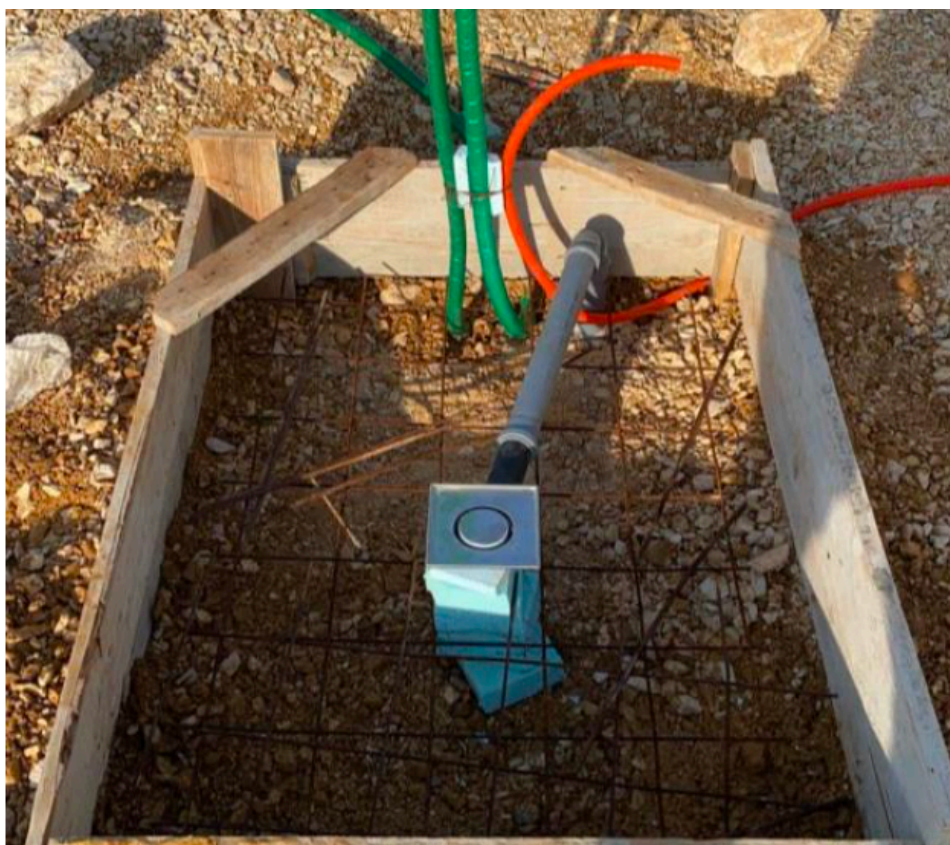


INSTRUCTIONS FOR PREPARATION OF SHOWER FOUNDATIONS FOR AN INFINITY LUXURY SHOWER

Step 1.

It is necessary to prepare:

1. wooden template 100 cm x 100 cm x 30 cm
2. cold and hot water pipe supply
3. power cord in the PVC tube
- * the cable must be two-core at 12 / 24V connected to the day/night light switch
4. drainage
5. armature



Step 2.

1. Fill the wooden template with concrete
2. Align to be 100% flat
3. Leave to dry





Step 3.

1. after 48 hours remove the template
2. 2. Leave to dry for the next 48 hours



Step 4.

1. shorten the pipe to 7 cm
2. put a male 1/2 cole connector on the pipe
3. if necessary, lower the 70 cm x 40 cm part by 3 cm 4. This area must be 100% flat



Step 5.

1. connecting pipes and electricity
2. lifting the shower into an upright position
3. placement in the level
4. drilling holes (14mm wide 20cm deep) for dowels
5. pouring chemical dowel and placing iron dowels (12mmx150mm)
6. drying of the chemical dowel (20min)
7. tighten the iron nuts



Step 6. (optional)

1. if desired, place ceramics or stone

